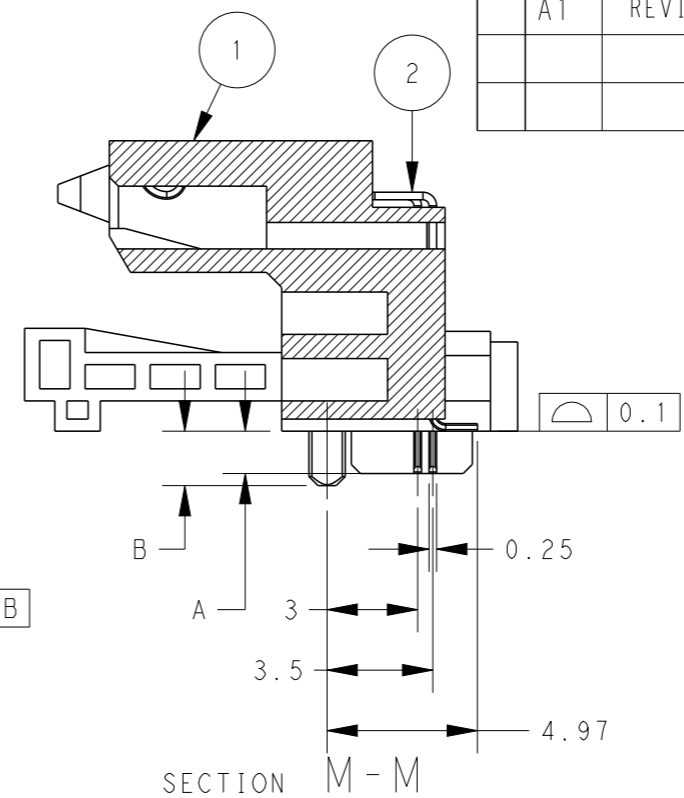
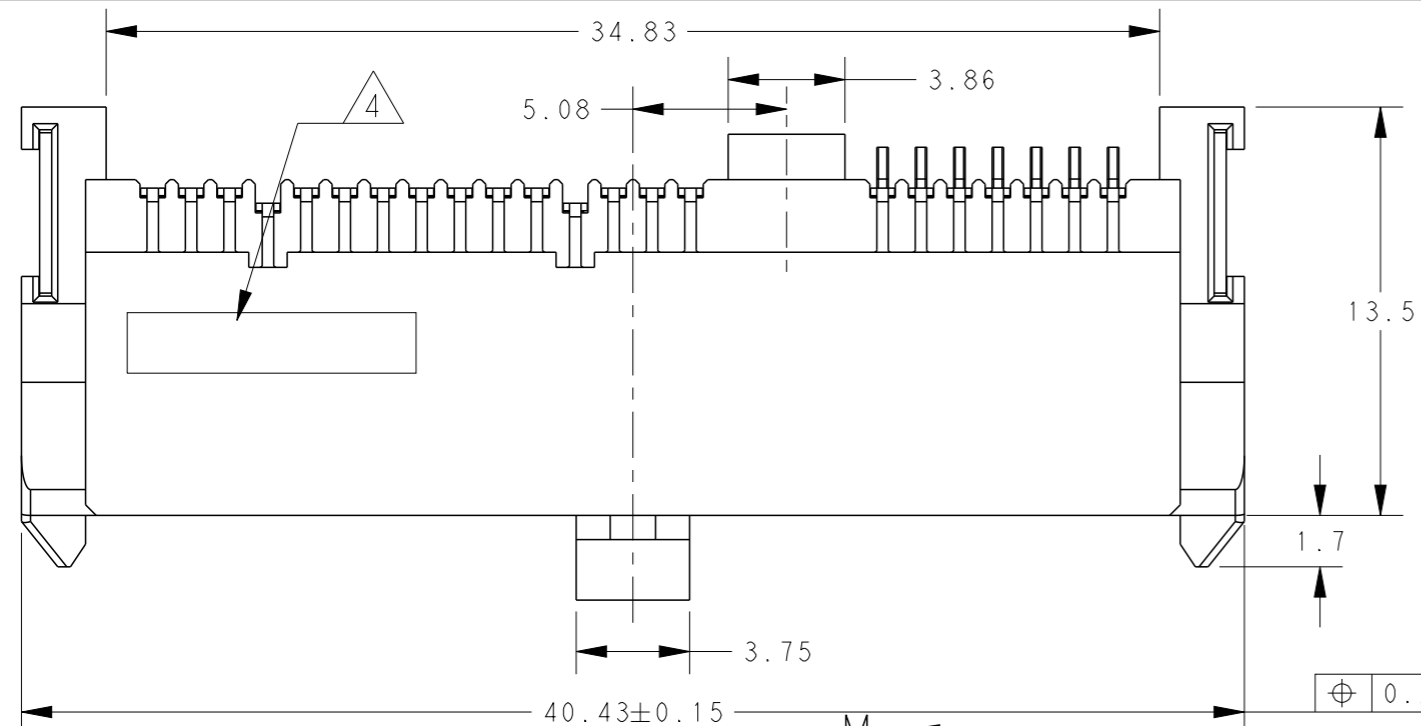


THIS DRAWING IS UNPUBLISHED. RELEASED FOR PUBLICATION 20
 © COPYRIGHT 20 BY - ALL RIGHTS RESERVED.

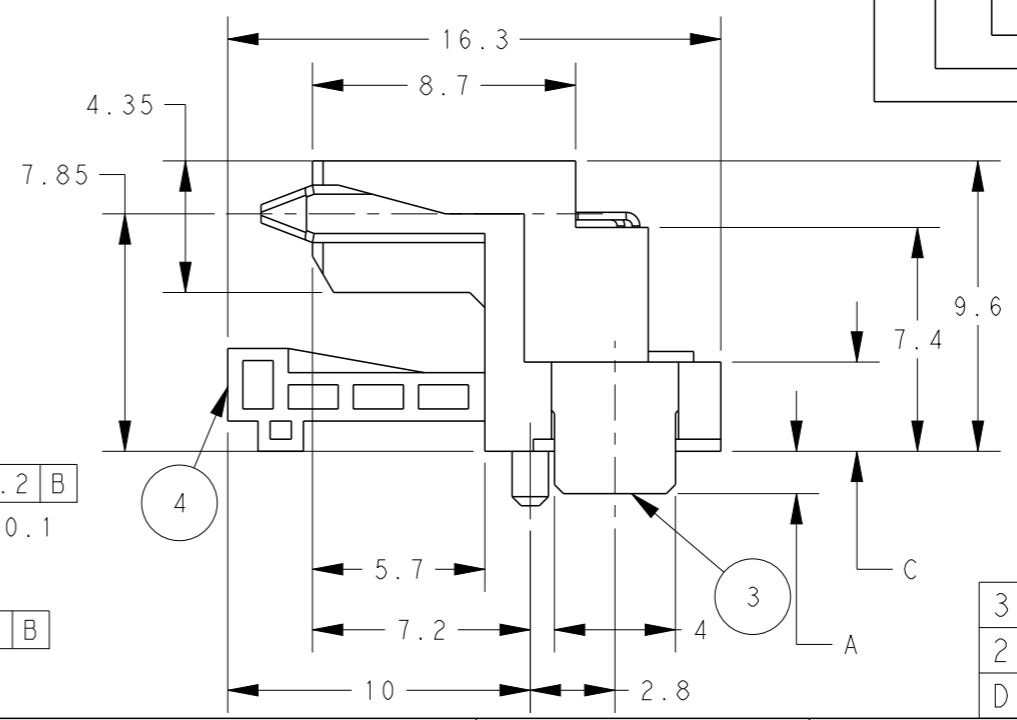
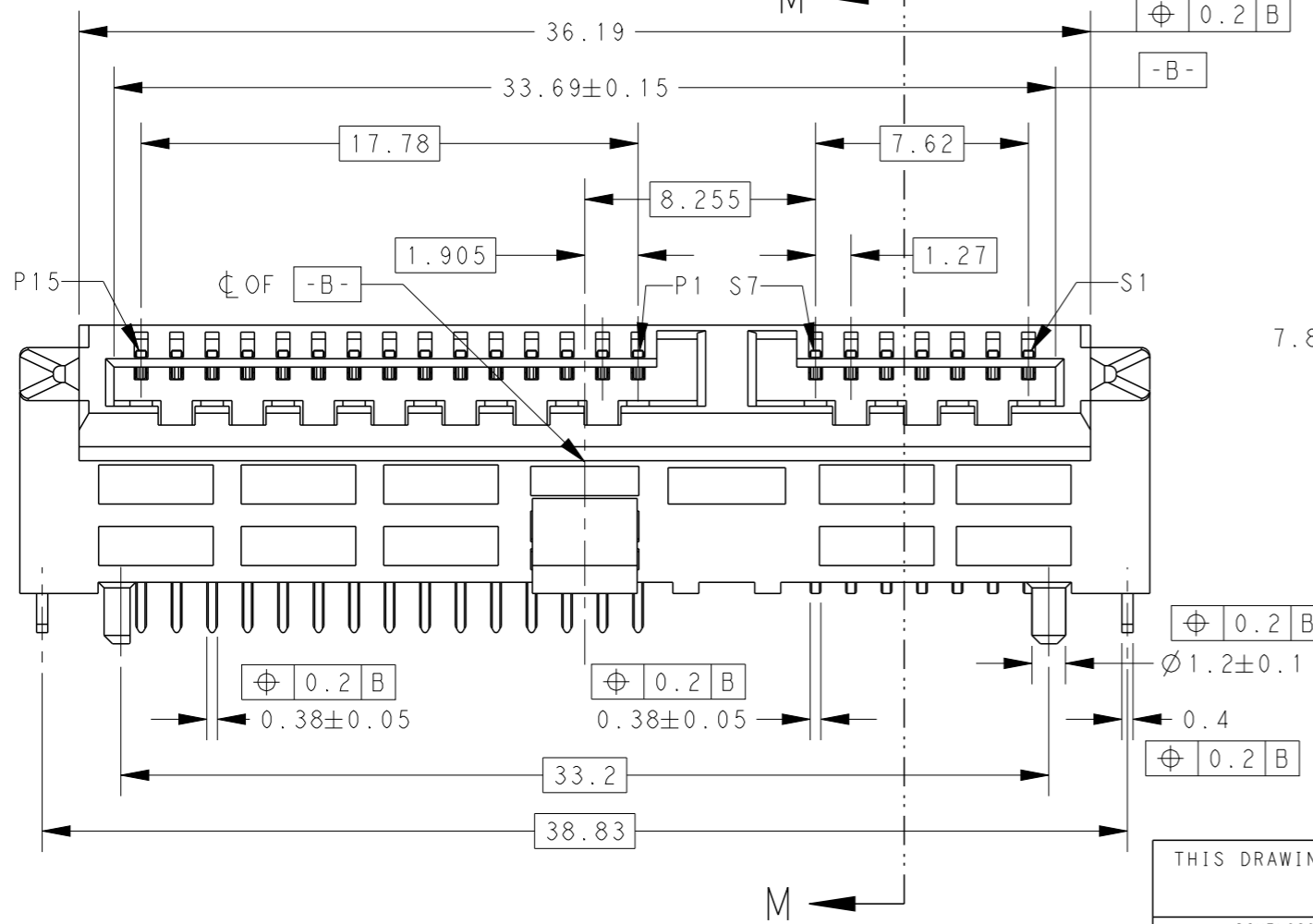
LOC DW DIST

REVISIONS

P	LTR	DESCRIPTION	DATE	DWN	APVD
	A	RELEASED	11OCT2013	W.C	V.P
	A1	REVISED(ECR-14-005112)	31MAR2014	W.C	V.P



- MATERIAL
 - ① HOUSING: HIGH TEMPERATURE THERMOPLASTIC UL94V-0, COLOR: BLACK
 - ② CONTACT: COPPER ALLOY
 - ③ LEG: COPPER ALLOY
 - ④ CAP: HIGH TEMPERATURE THERMOPLASTIC UL94V-0, COLOR: BLACK
 - FINISH:
 - CONTACT: CONTACT AREA: AU PLATING 0.127um WITH LUBRICANT HM-15
 - MATTE-TIN PLATING 2.5um ON SOLDER TAILS
 - NICKEL UNDER PLATING 1.3um OVER ALL.
 - SOLDER LEG: MATTE-TIN PLATING 2.5um
 - NICKEL UNDER PLATING 1.3um OVER ALL.
 - MEET HALOGEN FREE REQUIREMENT:
 - Cl: 900 ppm MAX.
 - Br: 900 ppm MAX.
 - Cl+Br: 1500 Max.
- DATE CODE
 YY WW D S
 ASSY MECHINE ID
 DAY OF WEEK
 WEEK OF YEAR
 THE LAST DIGITS OF YEAR



3.65	0.9	0.7	2129571-2
2.95	1.8	1.4	2129571-1
DIM.C	DIM.B	DIM.A	PART NUMBER

THIS DRAWING IS A CONTROLLED DOCUMENT.

DWN	W.CHEN	31OCT12
CHK	V.PENG	31OCT12
APVD	H.KODAMA	31OCT12
PRODUCT SPEC	108-99048	
APPLICATION SPEC	501-99048	
WEIGHT		
CUSTOMER DRAWING		

STE TE Connectivity

REC. ASSEMBLY
 SLANT INSERTION SATA H7.85
 6.0 GBPS

SIZE	CAGE CODE	DRAWING NO	RESTRICTED TO
A3	00779	C-2129571	-

SCALE 4:1 SHEET 1 OF 3 REV A1

DIMENSIONS:	TOLERANCES UNLESS OTHERWISE SPECIFIED:
mm	
	0 PLC ±0.2
	1 PLC ±0.2
	2 PLC ±0.2
	3 PLC ±0.2
	4 PLC ±0.2
	ANGLES ±5
MATERIAL	FINISH
①	②

4

3

2

1

THIS DRAWING IS UNPUBLISHED.

RELEASED FOR PUBLICATION

20

© COPYRIGHT 20 BY -

ALL RIGHTS RESERVED.

LOC

DIST

REVISIONS

P	LTR	DESCRIPTION	DATE	DWN	APVD
-	-	SEE SHEET 1	-	-	-

17.78
8.255
7.62
1.905
1.27
5.27±0.05
33.2±0.05
19.415
38.83
3.5
3
2.8
1.4±0.05
-V-
-W-
P15
P1
S7
S1
SEE DETAIL B
SEE DETAIL C
SEE DETAIL A

REFERENCE PCB LAYOUT
REFERENCE PCB THICKNESS T=1.0
SCALE 5:1

15°
HDD

4.9

SUGGEST TO ADD SUPPORTS ON THE
HDD NEAR THE CONNECTORS

0.7±0.05
2.3±0.05
⊕ 0.05 V W

DETAIL C
SCALE 10:1

1.2
0.6±0.05
5.4
4.8±0.05
⊕ 0.05 V W

DETAIL A
SCALE 10:1

1.05
1.45
0.75±0.05
⊕ ∅ 0.05 V W

DETAIL B
SCALE 10:1

THIS DRAWING IS A CONTROLLED DOCUMENT.

DIMENSIONS:
mm

TOLERANCES UNLESS
OTHERWISE SPECIFIED:

0 PLC	±0.2
1 PLC	±0.2
2 PLC	±0.2
3 PLC	±0.2
4 PLC	±0.2
ANGLES	±5

MATERIAL

FINISH

DWN	-
CHK	-
APVD	-
PRODUCT SPEC	-
APPLICATION SPEC	-
WEIGHT	-

CUSTOMER DRAWING

STE TE Connectivity

NAME

REC. ASSEMBLY
SLANT INSERTION SATA H7.85
6.0 GBPS

SIZE

CAGE CODE

DRAWING NO

RESTRICTED TO

A3

00779

C=2129571

SCALE 4:1

SHEET 2 OF 3

REV A1

1470-19 (3/11)

4

3

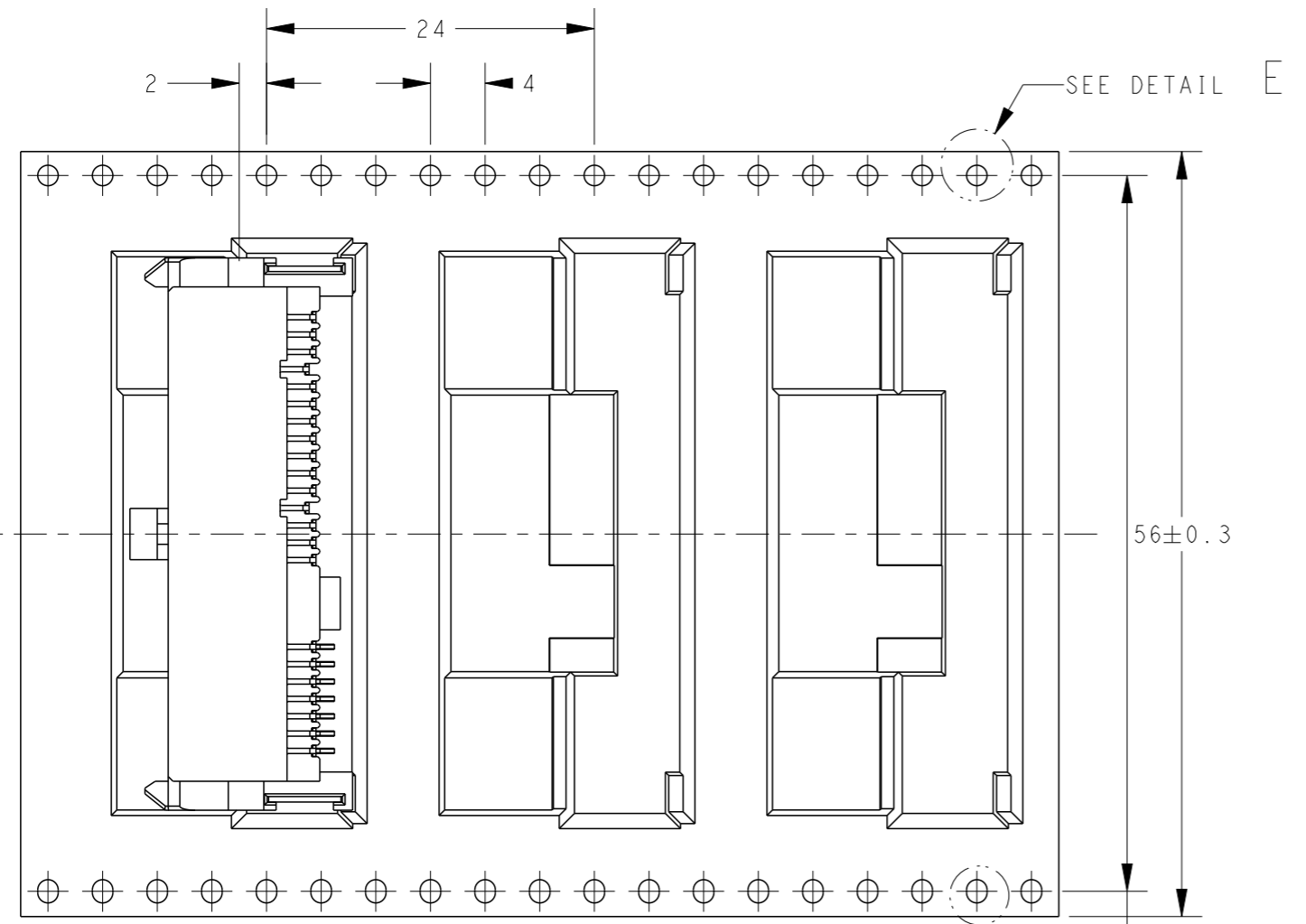
2

1

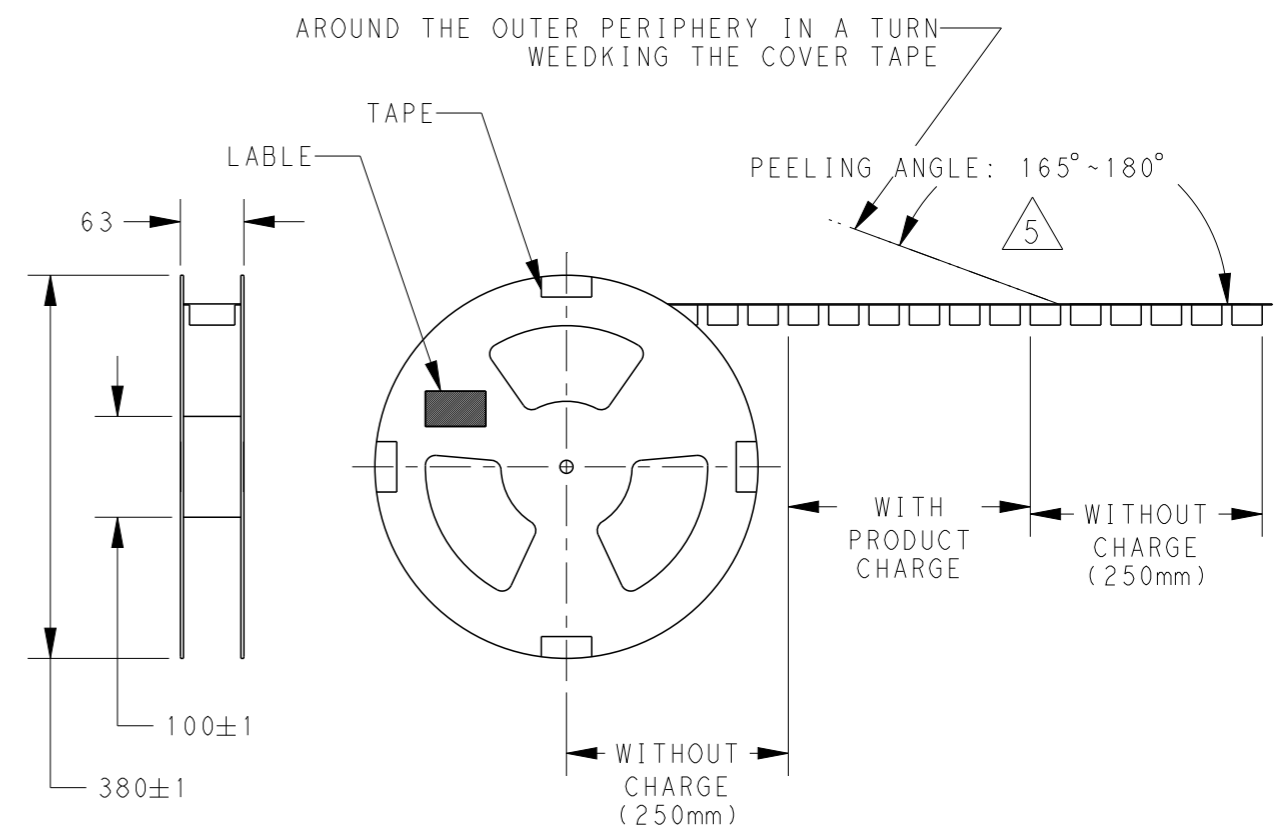
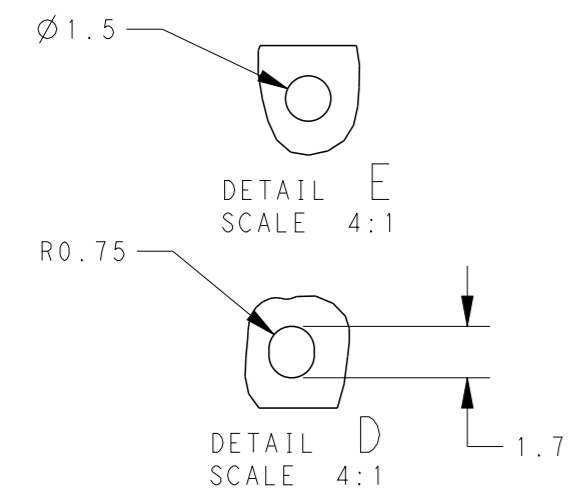
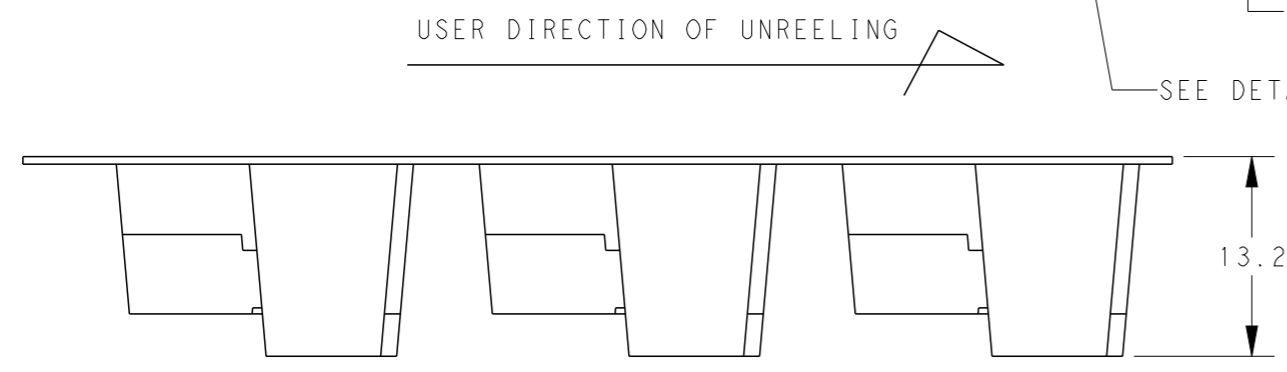
THIS DRAWING IS UNPUBLISHED. RELEASED FOR PUBLICATION 20
© COPYRIGHT 20 BY - ALL RIGHTS RESERVED.

LOC		DIST		REVISIONS			
P	LTR	DESCRIPTION	DATE	DWN	APVD		
	-	SEE SHEET 1	-	-	-		

- △ PEELING STRENGTH OF COVER TAPE: 0.2N~1.2N
- 6. PACKING MATERIAL: CARRY TAPE: PS, COLOR: CLEAR
COVER TAPE: PET, COLOR: CLEAR
- 7. QUANTITY: 280PCS/ REEL
840PCS/ BOX



USER DIRECTION OF UNREELING



THIS DRAWING IS A CONTROLLED DOCUMENT.		DWN	-	STE TE Connectivity	
DIMENSIONS: mm		CHK	-		
TOLERANCES UNLESS OTHERWISE SPECIFIED:		APVD	-	NAME	
0 PLC	±0.2	PRODUCT SPEC	-	REC. ASSEMBLY	
1 PLC	±0.2	APPLICATION SPEC	-	SLANT INSERTION SATA H7.85	
2 PLC	±0.2	WEIGHT	-	SIZE	A3
3 PLC	±0.2	CUSTOMER DRAWING	-	CAGE CODE	00779
4 PLC	±0.2		-	DRAWING NO	C-2129571
ANGLES	±5		-	RESTRICTED TO	-
FINISH	-		-	SCALE	N/A
				SHEET	3 OF 3
				REV	A1